

L-PAD STANDARD DOCK SEAL

S P E C I F I C A T I O N S



Design Highlights

- L-shaped sides compress around side of trailer to create a seal providing full width trailer access
- Provides positive seal between internal and external environments
- Endurance-tested foam core is continuously bonded to frame surface with flexible, nonflammable adhesive
- Wide selection of coated fabrics provide maximum durability
- Highly resilient, open-celled polyurethane foam compresses easily to extend seal life
- Roll-formed galvanized steel framing reduces pressure on building wall
- All pads are vented for air and moisture release
- Full length yellow stripes guide
- Heavy-duty, galvanized steel mounting brackets included



Project Information

Job Name _____
 Address _____
 General Contractor _____
 Distributor _____
 Quantity _____

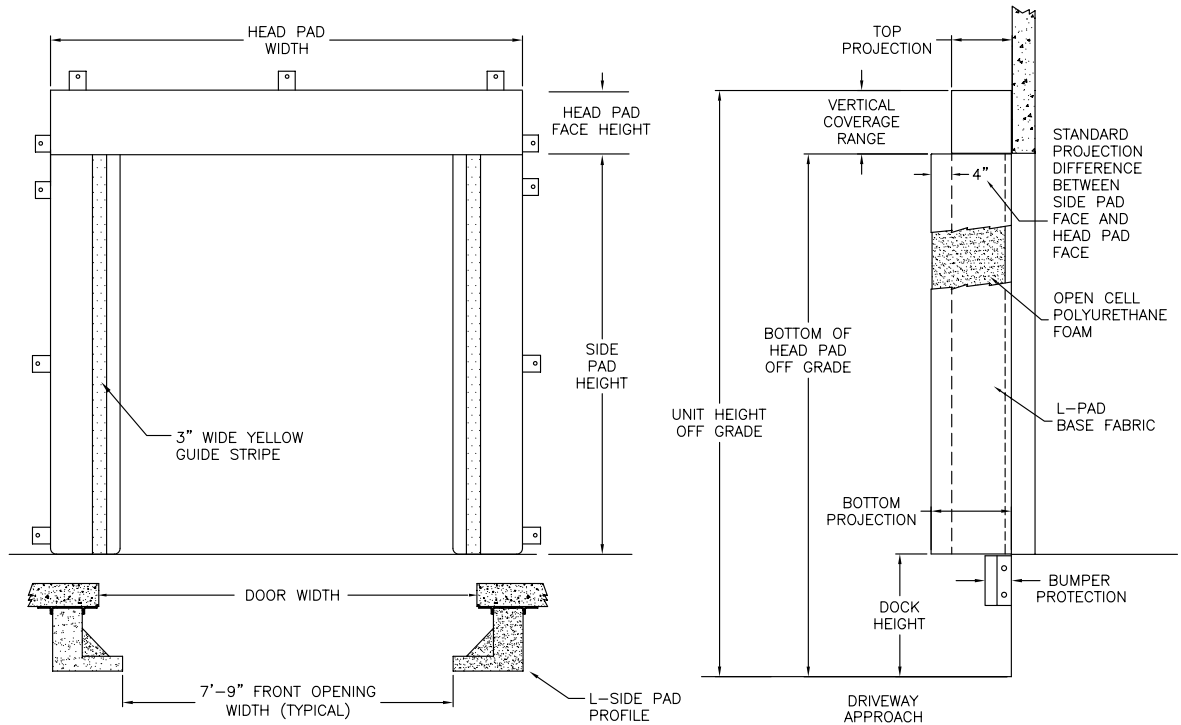
Certified For Construction

By _____
 Company _____
 Address _____
 Date _____



L-PAD STANDARD DOCK SEAL

DSSSL SERIES SPECIFICATIONS



QUANTITY _____

Model DSSL Flame Retardant Fabric & Foam Flame Retardant Fabric Only

Framing Roll-Formed Galvanized Steel

Head Pad Width 129" for 9'3" door widths or smaller 135" for 9'4" to 10'0" door widths

Head Pad Bevel 12/12 18/18 24/24 12/15 12/18 Wearmaster Head Pad

Drop Curtain None 12" Hook-Loop

Side Pad Height _____ (Total Unit Height)

Side Pad Face 18" for 9'3" door widths or smaller 21" for 9'4" to 10'0" door widths

Base Material 22 oz. Vinyl 40 oz. Vinyl 16 oz. CSM 40 oz. CSM TS-55®

Color Black Tan Brown Blue Green

Taper Tapered Non-Tapered

Top Projection 16" 18" 20" 22" 24" _____"

Bottom Projection 16" 18" 20" 22" 24" _____"

Blockout None Top Projection _____" Bottom Projection _____"

Wear Surface None Wear Face Side Pad Head Pad

Material 22 oz. Vinyl 40 oz. Vinyl 40 oz. CSM TS-55®

Color Black Tan Brown Blue Green

Wear Pleats None WP4 WP8 WP16 Side Pads Head Pad Corners

Material 22 oz. Vinyl 40 oz. Vinyl 40 oz. CSM TS-55®

Color Black Tan Brown Blue Green

Options Door Numbers

Side Pad Mounting Brackets None Flats & Angles Angles

1 1/2" Offset Flats & Angles

*Conversions: To convert measurements to metric, see formulas below:

Inches x 25.4 = millimeters (Example: 4" x 25.4 = 101.6 mm)

Feet x .3048 = meters (Example: 12' x .3048 = 3.66 m)

